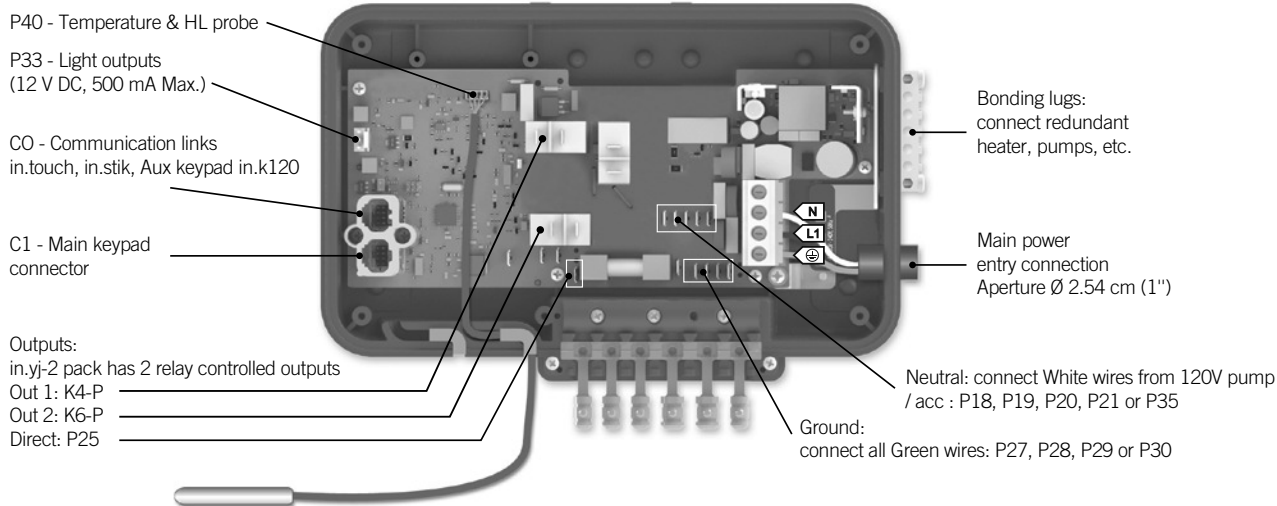




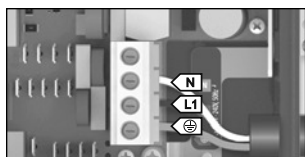
Quick Start Card

in.yj-2-re™ (120V only) North American version

1- Connect all outputs & keypads



2- Connect the main power



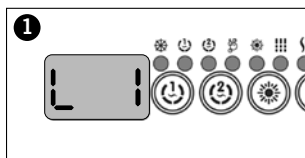
120 V (3 wires)

The in.yj supports single phase input
with up to 32Amp.

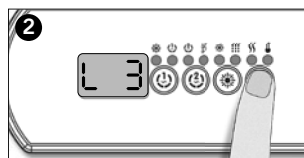
WARNING! All connections must be made by a qualified electrician in
accordance with the national electrical code and any state, provincial or local
electrical code in effect at the time of the installation.

This product must always be connected to circuit protected by a Ground Fault
Circuit Interrupter (GFCI).

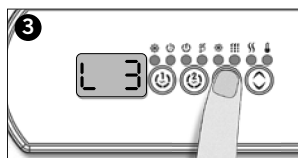
3- Select spa configuration (see chart next page)



At first startup the keypad display
will show **L 1** or **LL 1**.



Use the **Up/Down** key to choose the
new Low level configuration number.



Press the **Program** key to confirm the
selection.

For more information, see our
website: www.geckoalliance.com

Note: To re-enter the Low level
selection menu, hold the
Pump 1 key for 30 seconds.

Note: If the keypad does not have a
Program or **Filter** key, use the **Light**
key instead.

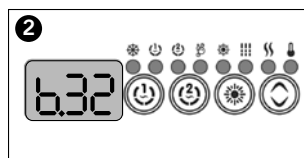
Note: For the **Color keypad series**,
select **Settings menu**, go into
Electrical config and choose the
appropriate Low level.

4- Select breaker current



Press and hold the **Program** key for
20 seconds until you access the
breaker setting menu.

Note: For the **Color keypad series**,
select **Settings menu**, go into **Electri-
cal config** and choose Input current.



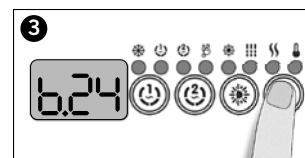
The values displayed by the system
correspond to **80%** of the maximum
amperage capacity of the GFCI.

For more information, see our
website: www.geckoalliance.com

Breaker setting for GFCI used.

GFCI	b
50 A	40 A
40 A	32 A
30 A	24 A
20 A	16 A
15 A	12 A

(10 to 20A is only to be use with
120V input)



Use the **Up/Down** key to select the
desired value. Then press the **Program**
key to confirm the selection.

Note: If the keypad does not have the
Program or **Filter** key, use the **Light** key
instead.



Configuration selection chart

Software #315, rev. 001

Information between () indicates which connector/tab to use. See drawing from Step 1 for connector position.

Standard config. #	Pump 1 / Heat recovery pump	Pump 2	Ozone (O3) configuration	Filter cycle daily
1	1SP (K4-P) 8A	–	(K6-P) 1A	2 * 1 hour with P1
2	2SP (K4-P, K6-P) 8A-4A	–	–	2 * 1 hour with P1
3	1SP (K4-P) 8A	1 SP (K6-P) 4A	–	2 * 1 hour with P1

Note 1: This heat recovery system has built-in "no heat" period of 1 minute. This allows a minimum delay during which any heat demand is disabled after the heater/pumps was shut off.

Note 2: Default current allowed by the power manage is 12A (physical breaker of 15A). P1/heater is consider 8A, P1L: 4A, P2: 4AMP and ozone: 1 Amp.

Glossary

P1	Pump 1
1SP	High speed only
2SP	High and Low speed
4A, 8A-4A	Output current: 1 speed or High-Low speed

For complete TechBook or more information, see our website: www.geckoalliance.com